

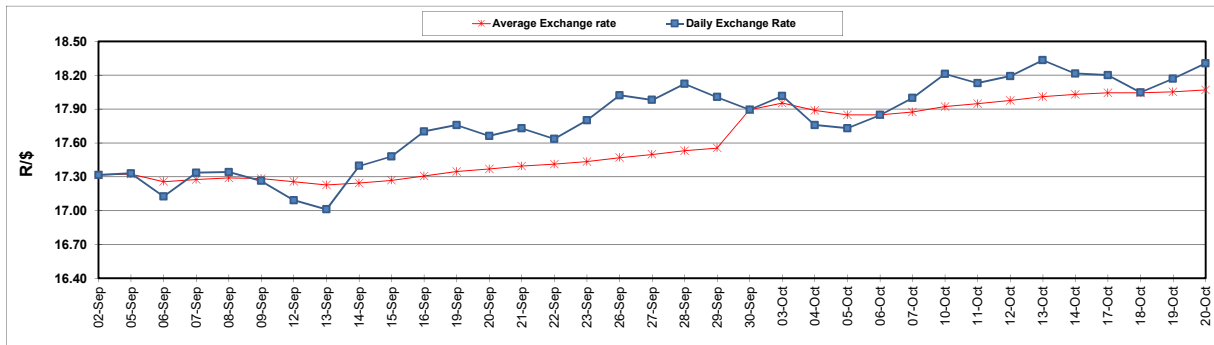
	PETROL 95 ULP	PETROL 93 ULP & LRP	DIESEL 0.05%	DIESEL 0.005%	ILL. PAR.
GAUTENG PUMP PRICE (SA c/l) AS FROM 05/10/2022	2,236.000	2,206.000	-	-	-
WHOLESALE PRICE (SA c/l) AS FROM 05/10/2022	-	-	2,406.100	2,430.500	1,699.288
SINGLE NATIONAL MAXIMUM RETAIL PRICE	-	-	-	-	2,240.000
BASIC FUEL PRICE - 20/10/2022 (SA c/l)	1,252.486	1,223.002	1,700.437	1,726.429	1,584.941
PRESS RELEASE CONTRIBUTION TO BFP 05/10/2022 - 20/10/2022 (SA c/l)	1,145.750	1,115.750	1,523.630	1,548.030	1,481.128
UNIT OVER/(UNDER) RECOVERY - 20/10/2022 (SA c/l)	(106.736)	(107.252)	(176.807)	(178.399)	(103.813)
AVERAGE BASIC FUEL PRICE 30/09/2022 - 20/10/2022	1,214.966	1,189.969	1,683.538	1,709.604	1,572.283
AVERAGE UNIT OVER/(UNDER) RECOVERY 30/09/2022 - 20/10/2022	(48.816)	(56.419)	(161.908)	(164.574)	(78.955)

ANALYSIS MOVEMENT OF AVERAGE OVER/(UNDER) RECOVERY

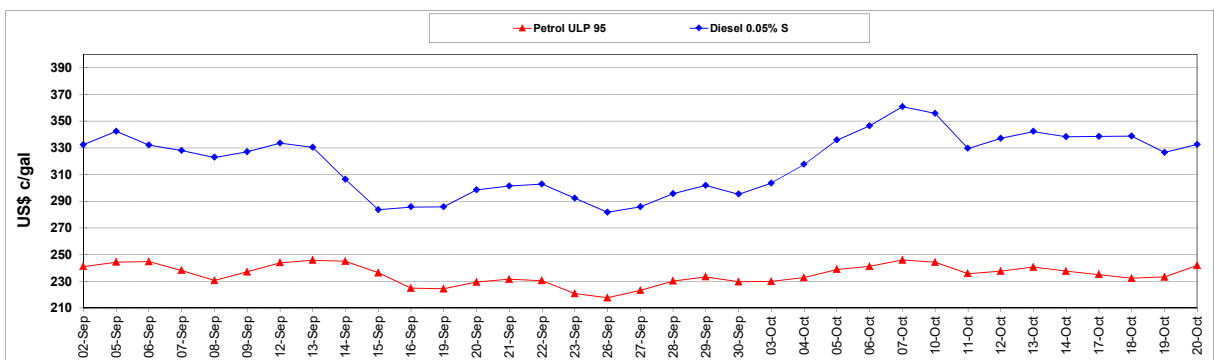
	PETROL 95	PETROL 93	DIESEL 0.05%	DIESEL 0.005%	ILL. PAR.
- MOVEMENT IN INTERNATIONAL PRODUCT PRICES	(44.526)	(52.217)	(155.964)	(158.538)	(73.404)
- MOVEMENT IN EXCHANGE RATE	(4.290)	(4.202)	(5.944)	(6.036)	(5.551)
AVERAGE UNIT OVER/(UNDER) RECOVERY 30/09/2022 - 20/10/2022	(48.816)	(56.419)	(161.908)	(164.574)	(78.955)

R/\$ EXCHANGE RATE - (R/\$18.3055 - 20/10/2022)

EXCHANGE RATE USED IN BASIC FUEL PRICE



INTERNATIONAL PRODUCT PRICES OF BASKET USED IN BASIC FUEL PRICE



BASIC FUEL PRICE IN SA CENTS PER LITRE

